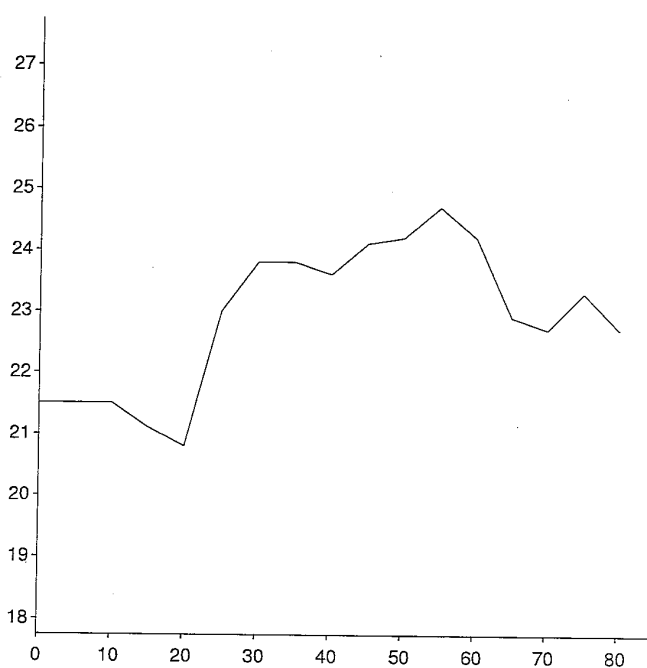
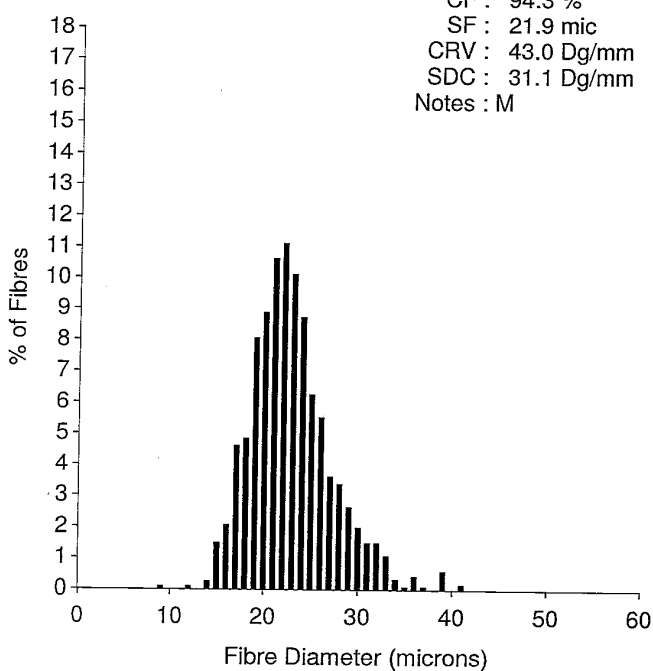


OFDA 2000 REPORT : SORTED BY EID/TAG

Samples 02/05/2019 (Trim High On) (153Records)

EID : ALO  
 EarTag : Elite Rolex  
 Micron : 22.8 mic  
 SD : 4.3 mic  
 CVD : 18.9 %  
 CEM : 8.6 mic  
 <15 : 0.4 %  
 CF : 94.3 %  
 SF : 21.9 mic  
 CRV : 43.0 Dg/mm  
 SDC : 31.1 Dg/mm  
 Notes : M

Staple Len : 85.0 mm  
 Min Mic : 20.8 mic  
 Max Mic : 24.7 mic  
 SD Along : 1.20 mic

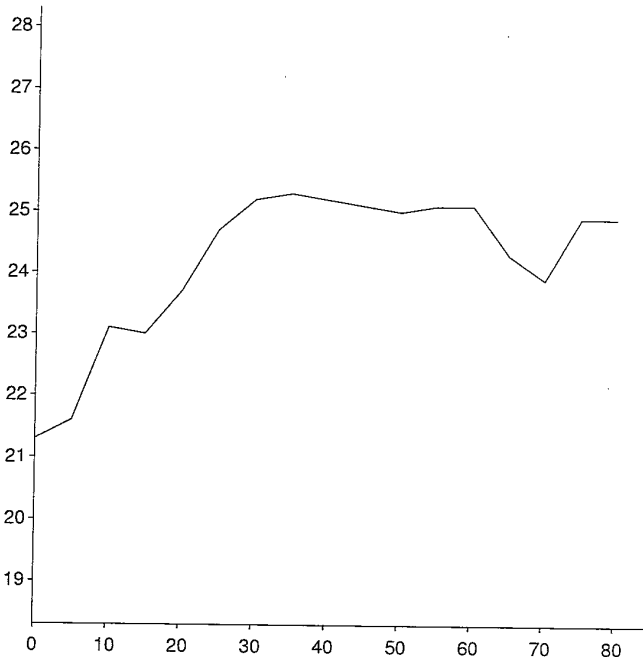
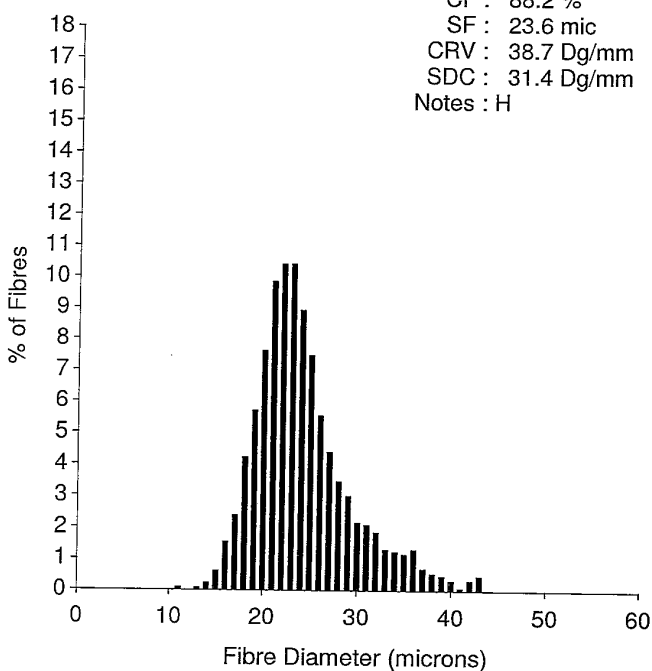


OFDA 2000 REPORT : SORTED BY EID/TAG

Samples 02/05/2019 (Trim High On) (153Records)

EID : ALO  
 EarTag : Elite Rolex  
 Micron : 24.2 mic  
 SD : 5.1 mic  
 CVD : 21.2 %  
 CEM : 11.1 mic  
 <15 : 0.4 %  
 CF : 88.2 %  
 SF : 23.6 mic  
 CRV : 38.7 Dg/mm  
 SDC : 31.4 Dg/mm  
 Notes : H

Staple Len : 85.0 mm  
 Min Mic : 21.3 mic  
 Max Mic : 25.3 mic  
 SD Along : 1.30 mic



EID : ALO  
 EarTag : Elite Rolex  
 Micron : 22.6 mic  
 SD : 4.7 mic  
 CVD : 20.7 %  
 CEM : 9.7 mic  
 <15 : 1.2 %  
 CF : 92.8 %  
 SF : 22.0 mic  
 CRV : 42.0 Dg/mm  
 SDC : 32.9 Dg/mm  
 Notes : V

Staple Len : 75.0 mm  
 Min Mic : 21.8 mic  
 Max Mic : 24.1 mic  
 SD Along : 0.70 mic

